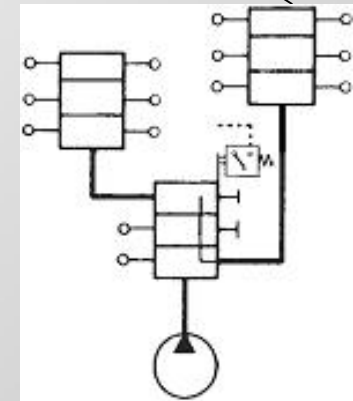
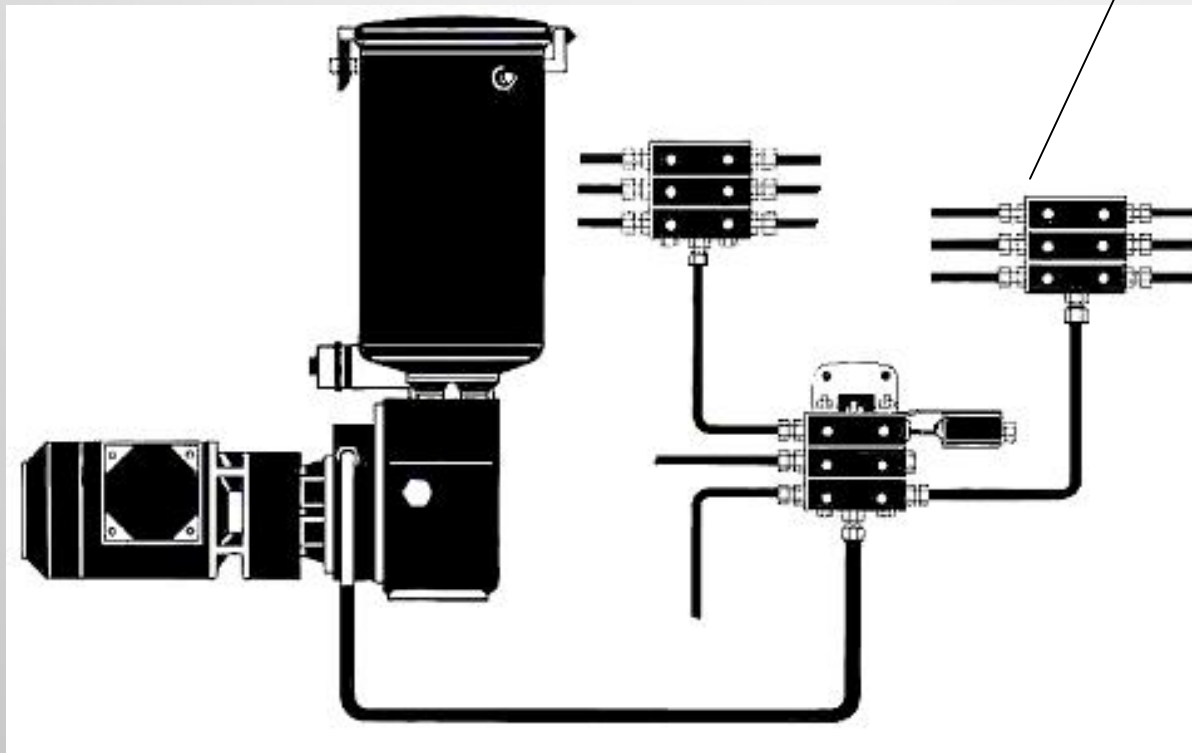


BDI EQUIPMENT FOR STEEL MILLS

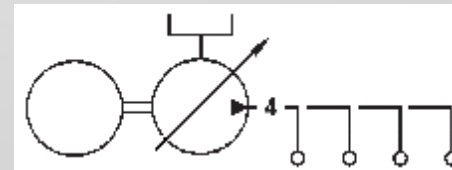
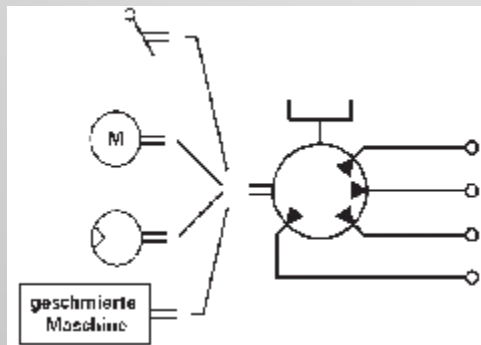
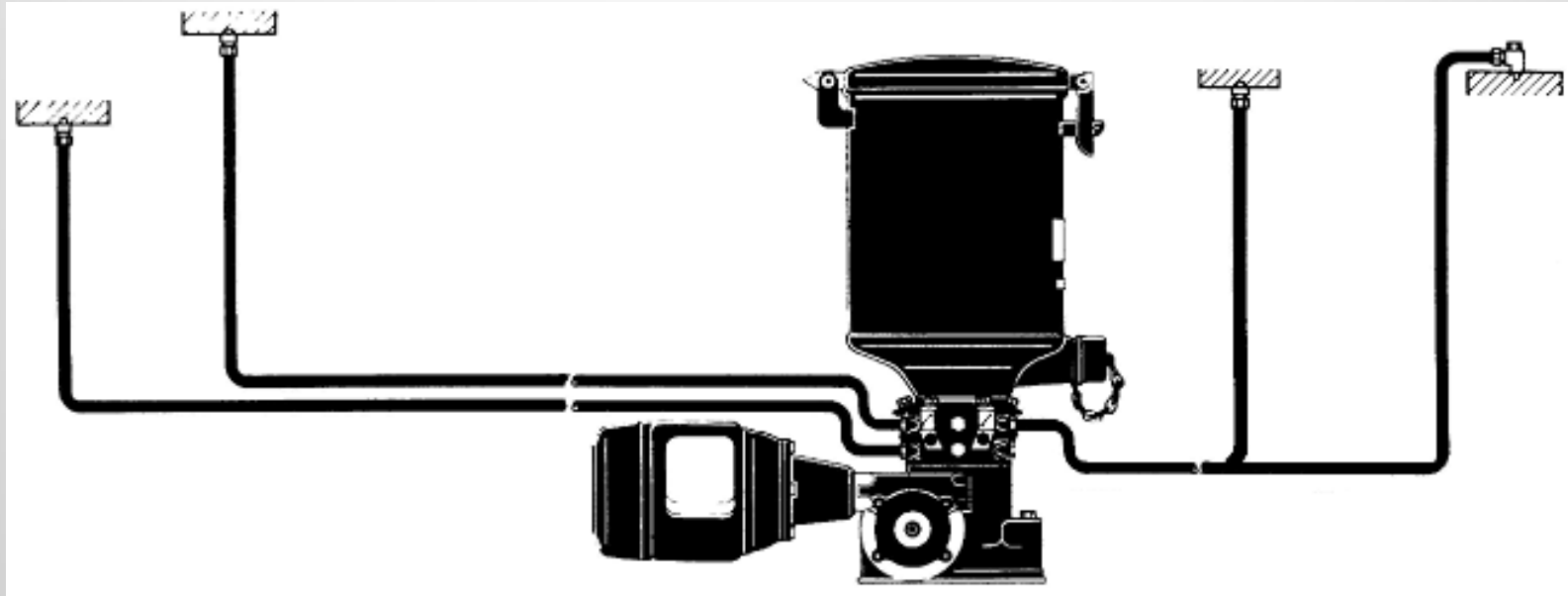
- DUAL LINE GREASE SYSTEMS
- SINGLE LINE PROGRESSIVE GREASE SYSTEMS
- MULTI-LINE GREASE SYSTEMS
- CONVEYOR LUBRICATION
- GIRTH GEAR SPRAY
- SKYJET AIR-OIL SYSTEMS
- SYNSAFE
- OIL RE-CIRCULATION SYSTEMS AND PRS
- ROLL COOLANT SYSTEMS
- WET EMULSION SYSTEMS
- OIL WATER SEPARATORS

TYPICAL PROGRESSIVE SYSTEMS

Progressive Distributor

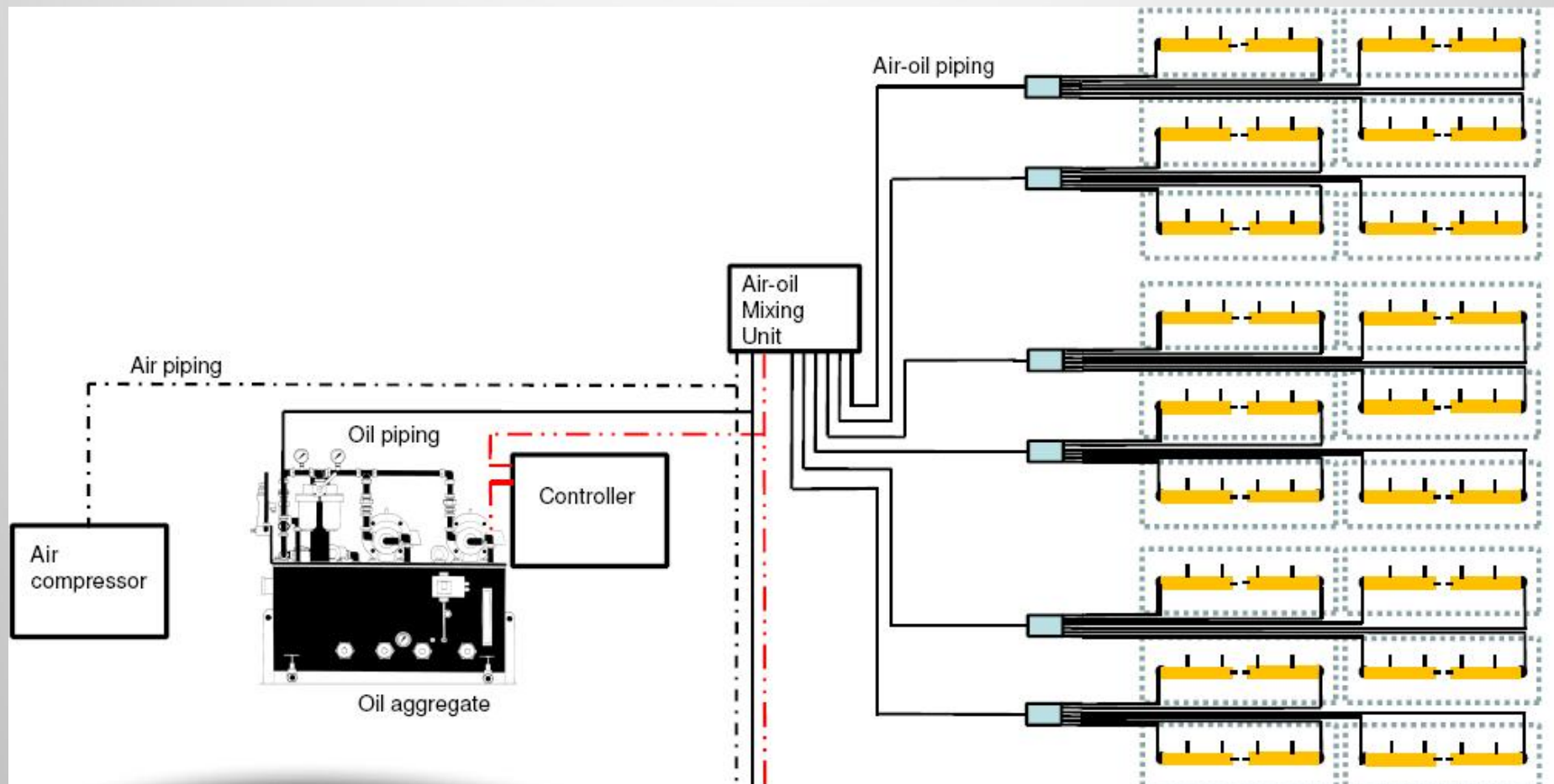


TYPICAL MULTI-LINE SYSTEM



Drive Methods

TYPICAL SKYJET SYSTEM



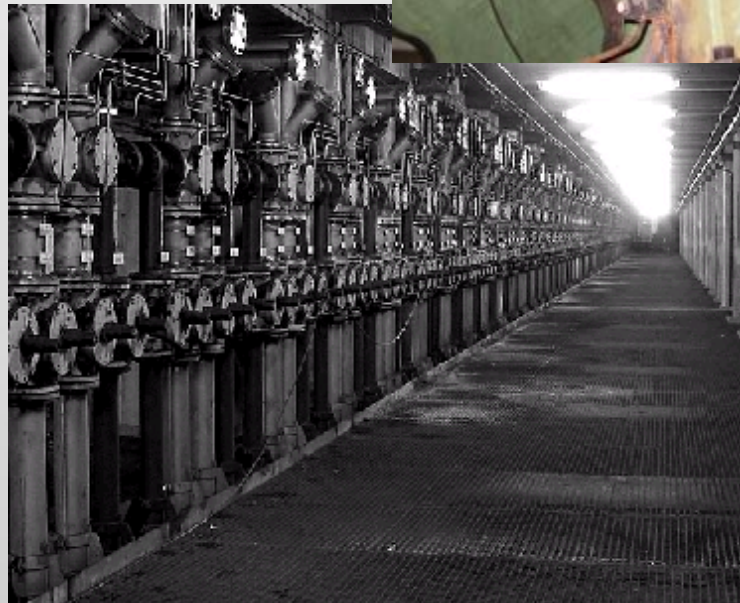
IRON MAKING PLANTS

- + DUAL LINE, CONVEYOR SYSTEMS, SPRAY SYSTEMS
- + Coal Handling
- + Blast Furnace Technology
- + Sinter Plants



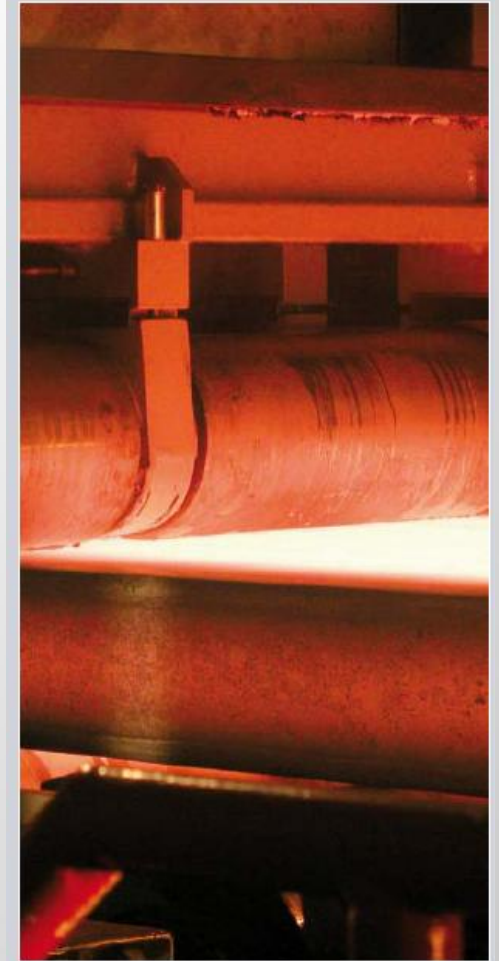
BLAST FURNACE AND SINTER COMPONENTS

- + Screw Conveyors
- + Ball Mills
- + Charge Cars
- + Cast House
- + Bell Less Tops
- + Bleeder Valves
- + Gas Probes
- + Sinter Plant Drives
- + Conveyor Wheels



CONTINUOUS CASTING

- + DUAL LINE, PROGRESSIVE & SKYJET AIR-OIL
- + SLAB CASTING
- + BILLET CASTING
- + BLOOM CASTING



FURNACES

- + **DUAL LINE**
- + **WALKING BEAM RE-HEAT FURNACE**
- + **TUNNEL FURNACE**
- + **PROCESS LINE - HORIZONTAL AND VERTICAL FURNACE**



STRIP ROLLING

- + DUAL LINE, SKYJET AIR-OIL, OIL RE-CIRCULATION, SYNSAFE
- + HOT STRIP MILLS
- + COLD ROLLING MILLS

