



Agency of



وكلاء

## Business-field

Development and Formulation of solvent-resistant Prepolymers on MDI- and TDI- based roll coatings in Cold rolling mills, Textile- and Paper industry.

Machine components subject to rotating, sliding and oscillating movements for sidesurgical plants, beverages, especially:

- wear plates in high wear resistant EP-PET for chocks and stands,
- Slipper pads for articulated spindle-heads in oil-filled cast Polyamide
- Roll covers in Elastomeres, rubber-and Polyurethane-based, solvent resistant, from 40° Shore A up to 70° Shore D
- Consulting in 3 or 4 component-Rotational Casting machines for Roll-covers in Polyurethane.
- Consulting in modernist casting and spun cast equipments for cast Polyurethane.
- Roll neck bearings in Fabric Resin, water-cooling and –greasing, only.
- Moulded- and pressed component in thermo- or duroplasts and elastomeres
- Idler- and Conveyor rolls

## Trade marks

EUROTHANE- Roll covers, moulded and rotational cast.

EUROPLAST- cast polyamides with additives,

EUROTEX- Fabric Resin, moulded and mechanically manufactured

## Rolling Mill Engineering :-

### 1- Slipper Pads for Articulated Spindles



### 2- Chock liners



Agency of



وكلاء

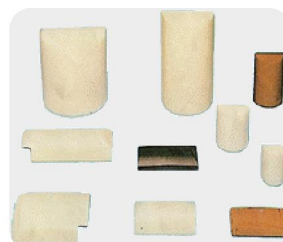
### 3- Fabric bearings



### 4- Elastic make up steeve for coilers and uncoilers



### 5- Wobbler's boxes with exchangeable Nylon inserts

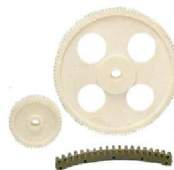
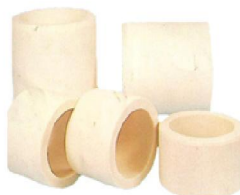
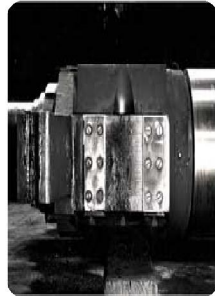
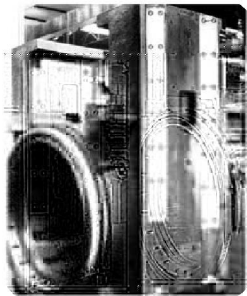


Agency of



وكلاء

6- Wear plates for cold rolling mills stands

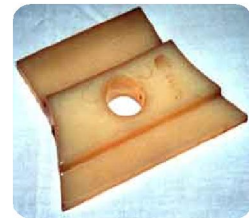


Agency of



وكلاء

Crane and Skull Spreading the load :-





Agency of



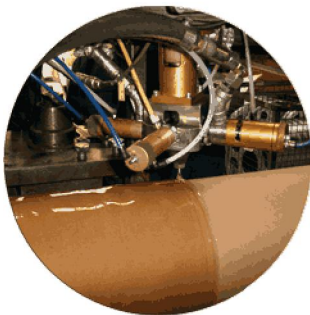
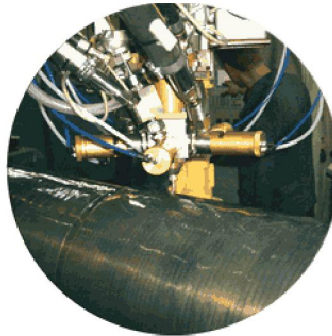
وكلاء

Run flat systems for security and military vehicles :-



component roller coating facility for all hardness ranges :-

Casting mixhead for the roller coating facility with replaceable mixing chambers, stirrers and discharge nozzles. Therefore best adaptation to the relevant coating problem.



#### Roller Coating Facilities

Roller coating plants according to the rotation casting method are included in our manufacturing program. They can be designed as three-component or four-component facilities. They cover the required hardness grades ranging .

A complete roller coating facility comprises the following units:

- metering unit including component tanks
- Mixhead moving unit
- Rotary device
- Facility control system